



The Trumpet

Trinity Episcopal Church

www.trinityparish.org

Trinity Episcopal Church ♦ Longview, Texas ♦ February 2015 ♦ Volume 25, Issue 2

HOLY PEOPLE, HOLY CONVERSATIONS

In my mind, I can imagine the whispers: "Watch out, Fr. Kevin is back from Chicago with more new ideas." I say that tongue and cheek because there is a kernel of truth in the midst of the whispers. When I come back from my D. Min. program I do find that I am reenergized and renewed in spirit. I am excited about beginning new conversations in the parish.

The classes offer me the priceless opportunity to spend time with a diverse group of colleagues. These are colleagues with churches who face many of the same challenges that we face at Trinity. They also, like us, are embracing many exciting new opportunities for growth and renewal in their parishes. This year we had the additional blessing of being joined by clergy and lay people from the Evangelical Lutheran Church of America.

This past week we closely examined the components of church identity. What are the implicit and explicit values that we hold as Episcopal churches? What are the things that we readily identify as being our core values? What are the things that shape who we are but remain hidden

from our conscious reflection?

Your Vestry has been doing a lot of work recently on creating new vision and mission statements for the church. To be sure, it is a slow and arduous process. It is a process, however, that demands our best efforts so that we will be led to a result that "satisfies and delights us," as our Prayer Book states.



An important part of the work we must do is to truly understand who we are. We must know the core values that have shaped us and continue to shape us. We must identify the barriers, both explicit and implicit, that we have erected, which keep others out. What prevents more people from joining us at Trinity? Of

course, not all boundaries are expandable. There must be boundaries that help identify who we are yet, they should be permeable boundaries that allow others to join us.

During Lent, we will be gathering for "Soup, Salad and Small Groups" on Wednesday evenings from 6:00 p.m. to 7:30 p.m. The theme for these gatherings will be "Holy People, Holy Conversations." During our time together, I will lead us in exercises that will help us examine the question of our boundaries and our barriers. I hope to do this in a way that will be fun and offer a maximum of time in small group conversation.

The questions and conversation we will engage in will hopefully not only offer us insight into our life together at Trinity, but into our own personal lives as well. After all, isn't that what the season of Lent is all about? Lent is a time for self-reflection and amendment of life. We will reflect on a number of themes that will both challenge and encourage us in our personal lives and in our work at Trinity. Please make every effort to join us for this wonderful time together!

TRINITY EPISCOPAL CHURCH

LONGVIEW, TEXAS

STAFF

The Rev. Kevin Wittmayer	Rector
Gary Whitwell	TST Head of School
Bill Bane	Director of Music Ministries
Tim Baker	Director of Student Ministries
Tisha Grotemat	Director of Children's Ministries
Leno Mancilla	Sexton
George Pliler	Endowment
Billie Padgett	Office Volunteers

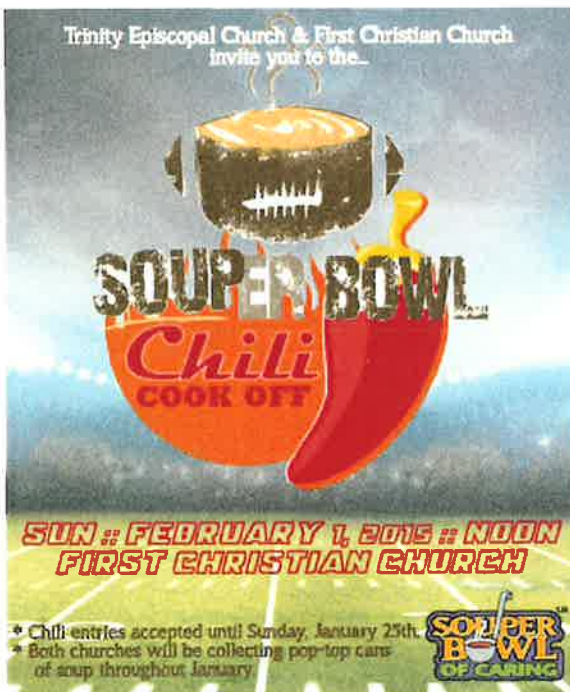
VESTRY

<u>Class of 2015</u>	<u>Class of 2016</u>	<u>Class of 2017</u>
David Balliett	Lucy Germany	Christy Collins
Scott Jones	John Hall	Karen Frith
Elise McClure	Kim Howard	Robert Maly
Ted Skeans	Ava Welge	Brian Wilks
John Hall, Senior Warden		
TBA, Junior Warden		
TBA, Treasurer		
TBA, Clerk of the Vestry		

MISSION OF THE MONTH



The Stewpot is a weekly lunch ministry of the Newgate Mission of Longview. The Newgate Mission serves the spiritual, physical, social, emotional, and financial needs of the homeless, low-income, and marginalized population in Longview. At noon, Monday through Friday, The Stewpot serves a hot meal to around 75-100 people. The projected cost of the meals is \$1.00 per person. The Stewpot is a collaboration with several area churches who provide support through volunteers and donations of both supplies and money. Volunteers are always welcome from Trinity Church to serve lunch on the third Thursday of each month from 11:45 AM to 1:00 PM. Please let Anne Rast know if you are interested in serving this important ministry in our Longview community.



Holy People Holy Conversation



**Wednesday Evenings
6:00 PM - 7:30 PM
Beginning February 25
The group will run for
the season of Lent.**

**Soup will be provided.
Bring your favorite side item to share.**



ST. MONDAY'S
Monday, February 2 - 11:30 AM

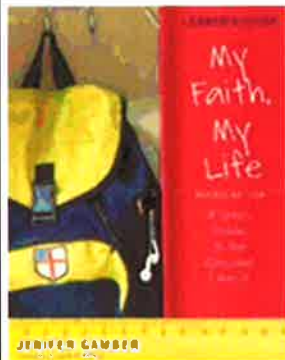
Menu is Mexican Fare

Guest speaker will be Walt Cade, Storage Room Auctioneer, who will speak about how to buy and sell junk. He will also share funny stories of TV Storage Wars.
Come share a good meal and good fun!



New Book Study
Beginning February 18th
 Based on the book, *New Clothes* by The Rev. John Newton, Canon for Lifelong Christian Formation in our diocese

Group will be led by Debra McLemore and will meet on Wednesdays at 1:00 PM.
 If you are interested, please contact Tisha Grotemat in the main office at (903) 753-3366 or trinity@trinityparish.org
Cost of book is \$15, available in the main office.



If you listen closely enough to youth, you'll hear their deep yearning to connect with God, and a powerful instinct to belong. We have designed a Sunday school class for fifth through ninth grade that speaks to students' desire to connect with God. This is a six weeks class that will run through the Lenten season

(February 22-March 29) during the Sunday School hour. If interested please contact Tim Baker. Your child will get their very own copy of the book.

In *My Faith, My Life*, youth learn all about the Christian faith they've been baptized into - the Episcopal Church that offers them a spiritual home. With lively writing that's always informative and never condescending, this book gives them all the basics they need to understand their faith - and claim it as their own. Closely linked to the Book of Common Prayer, *My Faith, My Life* covers everything from scripture, Church history, and the sacraments, to the meaning of prayer and ministry in the lives of real teens today.

Email Tim Baker today to reserve your child a copy of a book at tbaker@trinityparish.org



† **Lenten Service of Evening Prayer**
 Monday - Friday at 5:30 PM
 Beginning Thursday, February 19

Evening Prayer will be held in the choir area of the nave.



Shrove Tuesday Pancake Supper

Hosted by the Vestry

February 17
5:30 PM to 7:00 PM
Parish Hall

A S H W E D N E S D A Y
F e b r u a r y 1 8

Service Times

10 AM
 Imposition of Ashes

12:15 PM & 6 PM
 Eucharist &
 Imposition of Ashes



Service of Compline

Come and worship with us as we celebrate the ancient monastic service of Compline performed by the men's Compline Choir.

Join us for refreshments in Guild Hall immediately following.

SUNDAY, FEBRUARY 8
8:30 PM

FEBRUARY STEWARDSHIP ARTICLE

The Defining Characteristics of a Good and Faithful Steward

Tragic as it is, the concept of stewardship is so poorly taught and so poorly practiced among followers of Jesus that it is necessary to provide a clear description of how a good and faithful steward should live. The life of an obedient steward possesses three dominant life-characteristics. As we consider each of these characteristics, may it enable us to better assess how well we are personally living the life of a good and faithful steward.

A Good and Faithful Steward Lives an *Examined Life*

This practice of living a life of regular self-examination is often referenced in the Bible. In II Corinthians 13:5 Paul told the believers in Corinth, "*Examine yourselves to see whether you are in the faith; test yourselves...*" He also tells them in I Corinthians 11:28 that, "*A man ought to examine himself before he eats of the bread and drinks of the cup (communion).*" Even Jeremiah exhorts his people in Lamentations 3:40, "Let us test and examine our ways."

There is nothing more appropriate for a faithful manager of someone else's resources than to routinely examine how effectively he is carrying out his responsibilities. A steward will continually examine his behavior, his motives, his thoughts, his attitudes, the direction of his life and how well he is imitating the life of Jesus.

Unfortunately, we often only examine our lives when something is going wrong or we face some significant crisis. In the midst of that trial, we finally pause to take stock of our lives to determine what might have caused this difficult situation. Crisis examination is certainly better than no examination at all, but may I suggest that a good and faithful steward will be doing routine self-examination as part of his daily life.

I have been told by more than one pilot that a plane when in the air is off course about 95% of the time due to wind currents, barometric pressure, etc. Because of this, the pilot must be vigilant in making continual minor course corrections to bring the plane back on course. If he does not, he will find, after several hours of flying that his plane is actually hundreds of miles off course.

The good and faithful steward is like the attentive pilot in flight – continually examining the course of his or her life to determine if it is still following the flight pattern that has been set by the "Tower." The steward will routinely make whatever midcourse corrections to his life that are needed regardless of how subtle or how dramatic they need to be. He recognizes that the gravitational pull of this world and the unpredictable winds of temptation can very quickly get him off course.

Socrates correctly concluded, "The unexamined life is not worth living." So, would the word *examined* describe your life?

A Good and Faithful Steward Lives a *Controlled Life*

Living a controlled life is a foundational characteristic of a good and faithful steward. Self-control is one of the fruits of the Spirit (Galatians 5:23). Paul repeats several times in his letter to Titus that believers are to live a controlled life. Elders are to have their lives under control (Titus 1:8). Older men are to be self-controlled (Titus 2:2). Young men and women are to be self-controlled as well (Titus 2:5-6).

Paul uses the discipline and self-control of an athlete in training to illustrate the controlled life of a steward (I Corinthians 9:25). Just two verses later he applies self-control to himself when he says, "*But I discipline my body and keep it under control...*"

I think Solomon makes this point best when he says in Proverbs 25:28, "*A man without self-control is like a city broken into and left without walls.*" There is nothing to contain him and he lives a life that is out of control in one or more ways.

We all know people who lack self-control. They cannot control their tempers. They cannot control their appetites. They cannot control their emotions. They cannot control their tongues. They cannot control their

sex drives. They cannot control their spending. In one or more ways they are lacking self-control. They are *"like a city broken into and left without walls."*

The good and faithful steward, to the contrary, is constantly restraining and retraining his natural impulses to keep all of these fleshly desires (both good and bad) under control. He is diligently working day-by-day and often minute-by-minute to keep his head in the game and not allow *"the desires of the flesh and the desires of the eyes and pride in possessions..."* (1 John 2:16) to break down the walls of self-control that is a defining characteristic of a good and faithful steward.

John Milton said well, "He who reins within himself and rules passions, desires and fears is more than a king." The steward who is in control will be both useful and effective in obediently serving his Master.

So, would the word *controlled* describe your life?

A Good and Faithful Steward Lives a *Sacrificial* Life

The third characteristic that will always be commonly seen in the life of a good and faithful steward is sacrifice. We simply cannot be good and faithful stewards if sacrifice is not a part of our lives.

Paul calls us to be *"living sacrifices"* (Romans 12:1). Jesus challenges every steward that if he wants to follow Him, *"let him deny himself and take up his cross daily and follow me"* (Luke 9:23). The cross in Jesus' day was used for only one purpose, to kill someone. So the imagery He is giving us is quite dramatic. He is not calling us to a one-time sacrificial death for "the cause." The sacrifice He is describing here is to be a daily sacrifice. Each day, we are to put to death our wishes, our desires, our agenda, our comforts, our free time and our hopes for the greater good of the Kingdom and the world we seek to win.

In his book *The Kingdom and the Cross*, James Bryan Smith suggests that, "If our God is self-sacrificing and seeks to bless others who have done nothing to merit it, then we should be people who are self-sacrificing and who bless others who have not earned it."

There is no more powerful demonstration of a good and faithful steward than when he willingly and sacrificially gives to others without any consideration of their worthiness to receive his gift.

Regardless of how great or small the need or opportunity, he gladly sacrifices whatever he currently manages for the good of others.

John gives us the ultimate extent to which we must be willing to live a sacrificial life. He said in 1 John 3:16, *"By this we know love, that He laid down His life for us, and we ought to lay down our lives for the brothers."*

If sacrificing our lives is the maximum sacrifice we might be called to make as a steward, it seems to put into a clear context the modest sacrifices we make when we give some of the money, or the time or the talents we have been given to manage to help others.

So, would the word *sacrificial* describe your life?

If we want to be identified as a good and faithful steward and someday hear those wonderful words, *"Well done,"* we must (1) routinely examine ourselves to be sure that our lives are on the right course that has been set by our Master. (2) We need to be vigilant that we control our appetites and impulses to ensure that they do not end up *controlling us*. (3) We need to be regularly and generously sacrificing what we have been entrusted with in hopes of bringing a little bit of heaven to those who are here on earth. Living the life of a good and faithful steward is a tremendous challenge. Are you up to the challenge?

(Reprinted with permission. Article by EJ Link at JLink@StewardshipMinistries.org; www.StewardshipMinistries.org)

PRAYER

Lord Jesus, we commit ourselves to being good stewards. Help us to be grateful, accountable, generous and willing to give back with increase. Help us to make stewardship a way of life. *AMEN*

January Vestry Report

by Lucy Germany

In a vestry meeting that opened with a decided focus on finances, it was good news to the members to hear Barney Jones, vestry treasurer, describe December as a "basically good month" financially. "All is well," he told the assembled vestry members, "liabilities and assets are in balance". Increase in pledges puts the church \$40,000 "in the black" and the church's financial condition is "stable and sound". Jones ended his presentation with the announcement that this would be his last meeting with the vestry, in keeping with his announcement to the group at its prior meeting of his intention to step down. He said that 98% of the pledges had been sent in and the response from people who had not pledged previously had appreciated.

Eleven new pledges brought in \$29,450 and pledges from members brought that number up to over \$45,000. The 41 pledges which showed an increase in giving amounted to a total of \$35,444. Still there remains a list of longtime members who have not pledged and vestry members have volunteered to contact them.

There was mention of a need for vestry members to assist in planning and serving at the annual Shrove Tuesday pancake supper and a number of those present agreed to help.

The rector's report brought

forth a number of statistics on the year's activities including baptisms, Holy Communion, and basic church attendance at the two Sunday services. In his discussion of the budget, Fr. Kevin noted that 536 pledges have been received, that 60 members gave to the open plate offering at one or more of the services. There was additional giving by way of other avenues such as altar flowers, all of which help to fund the church's many activities and services as well as for meeting perpetual maintenance needs. It was noted that the current deficit of \$30,000 could be substantially reduced or erased if additional pledges are received though in the event of further support not being forthcoming, the surplus of 2014 could be used to cover any remaining deficit.

Fr. Kevin talked about priorities, the need for certain budget cuts, and the good news of an increase in non-pledged income by \$40,000. He pointed out the cost of maintaining building and grounds upkeep, and that of a recently installed new telephone system, all of which are among Trinity's more widely known needs. Taking into consideration the quality of the building, maintenance of grounds, interior furnishings, safety features and the compendium of other expenditures which are the backbone of the church's safe, comfortable atmosphere, Trinity can easily be said to be an

outstanding place of worship.

Fr. Kevin wrapped up the evening's session with a personal message to the group, describing with enthusiasm his love for Trinity Church and people. He explained the wide span of his commitment: teaching and preaching - his major interests, preparing the church's budget and being wise in the fulfillment of its obligations, facing the huge challenge of being a lone priest [in this sized parish] which means keeping a "lot of plates in the air," meeting the many demands and needs of a mature congregation, and seeing to it that the people in the pews continue to build ownership of their church. The task includes being open to new ideas, to doing things differently when the opportunity makes them known, to be bold enough to continue the study of the church's approach to people needs, to continue to enjoy involvement in ministry in all of its levels and to be on the lookout always for ways in which improvement in service and stewardship can be examined.

The board approved the parochial report covering stewardship and financial data as well as membership, and attendance at services. Fr. Kevin asked that the four outgoing vestry members serve as tellers for the annual meeting election.

The next vestry meeting, in which the newly elected members will begin service, is scheduled for February 17.



FEBRUARY 2015

Birthdays & Anniversaries



Happy Birthday

2/1	Jeanette Kirkindoll	2/10	Alexandra Jones	2/22	Billie Padgett
2/1	Julie Hayes	2/11	Jan Barth	2/23	Margaret Partin
2/2	Daphne Scott	2/12	Harry Barth	2/23	Nancy Elswick
2/3	Mike Lewis	2/12	Gail Wilks	2/24	Stephanie Howard
2/4	Pat Florence	2/13	Carol Ann Walker	2/24	Loretta Lloyd
2/4	Eugenie Holman	2/13	Robert Hampton	2/25	Tom Devon
2/4	Alyce Sparks	2/15	James Thomas	2/25	Anne White
2/10	John Robbins	2/16	Mike Abernathy	2/27	James Crittenden
2/10	David Balliett	2/19	Betty Falco		

Happy Anniversary

2/5	David & Brenda Alexander
2/20	Wiley & Judy Thomas

Trinity Service Calendar

Month of February – Lectionary Year B

Date	February 1 The Fourth Sunday after Epiphany	February 8 Fifth Sunday After The Epiphany:	February 15 The Last Sunday After The Epiphany	February 22 The First Sunday in Lent
First Reading Psalm Second Reading Gospel	Deut. 18:15-20 Psalm: 111 1 Cor. 8:1-13 Mark 1:21-28	Isaiah 40:21-31 Psalm: 147:1-12,21c 1 Cor. 9:16-23 Mark 1:29-39	2 Kings 2:1-12 Psalm: 50:1-6 2 Cor. 4:3-6 Mark 9:2-9	Genesis 9:8-17 Psalm: 25:1-9 1 Peter 3:18-22 Mark 1:9-15
Altar Team	Crittenden Team	Mann Team	Baker Team	Collins Team
Verger	S. Alford	J. Barbe	C. Collins	M. Wilks
Parish Security	T. Todd	T. Devon	J. Crittenden	G. Pliier
Coffee Hour	C. Sikes	D. Whitwell	MOM	L. Leath
Flower Delivery	K. Frith B. Crittenden	K. Frith D. Fricks	K. Frith D. Skeans	K. Frith J. Walters
Early Service				
Ushers	E. Campbell M. Pliier	E. Campbell M. Pliier	E. Campbell M. Pliier	E. Campbell M. Pliier
Greeters	Charles Team	Maly Team	Charles Team	McWhorter Team
Acolyte	T. Gignilliat	G. Rushing	T. Gignilliat	J. Hall
Lay Readers 1 st Reader 2 nd Reader	G. Hoover G. McWhorter	B. Charles G. Rushing	N. Collins G. Hoover	G. Rushing J. Hall
L. E. M.	G. Hoover G. McWhorter	B. Charles G. Rushing	N. Collins G. Hoover	G. Rushing J. Hall
Late Service				
Ushers	Thorson Team	Crittenden Team	Jones Team	Kirkindoll Team
Greeters	Skeans Team	Barbe Team	Kirkindoll Team	Gray Team
Acolytes	Team 1	Team 2	Team 3	Team 1
Lay Readers 1 st Reader 2 nd Reader	A. Sharp C. Collins	G. McWhorter C. Stevens	L. Germany J. Sloan	S. Thomas W. Scott
L. E. M.	J. Welge C. Collins	G. McWhorter S. York	L. Germany J. Sloan	J. Sawyer J. Fowler
L. E. V.	L. Leath J. Mraz		B. Charles M. Arnold	

FEBRUARY 2015

Sun	Mon	Tue	Wed	Thu	Fri	Sat
<p><i>1</i></p> <p>Regular Sunday Schedule</p> <p>9:00 AM Youth Sunday School Donut</p> <p>Super Bowl Chili Cook-Off First Christian Church Immediately following 10:30 AM Service</p>	<p><i>2</i></p> <p>11:30 AM St. Monday's</p>	<p><i>3</i></p>	<p><i>4</i></p> <p>12:15 PM Holy Eucharist 7:00 PM Chancel Choir</p>	<p><i>5</i></p>	<p><i>6</i></p>	<p><i>7</i></p>
<p><i>8</i></p> <p>Regular Sunday Schedule</p> <p>4:00 PM Youth Hang Time</p> <p>8:30 PM Compline</p>	<p><i>9</i></p> <p>5:30 PM Daughters of the King</p>	<p><i>10</i></p> <p>6:00 PM Senior Men's Dinner</p>	<p><i>11</i></p> <p>12:15 PM Holy Eucharist 7:00 PM Chancel Choir</p>	<p><i>12</i></p>	<p><i>13</i></p>	<p><i>14</i></p>
<p><i>15</i></p> <p>Regular Sunday Schedule</p> <p>5:30 PM Youth Guys/Girls Small Groups</p>	<p><i>16</i></p> <p>CHURCH OFFICES CLOSED</p>	<p><i>17</i></p> <p>5:30 PM Shrove Tuesday Pancake Supper - Parish Hall</p> <p>7:00 PM Vestry</p>	<p><i>18</i></p> <p>ASH WEDNESDAY Imposition of Ashes: 10:00 AM 12:15 PM 6:00 PM</p> <p>1:00 PM "New Clothes" Book Study</p> <p>7:00 PM Chancel Choir</p>	<p><i>19</i></p> <p>5:30 PM Evening Prayer</p>	<p><i>20</i></p> <p>5:30 PM Evening Prayer</p>	<p><i>21</i></p>
<p><i>22</i></p> <p>Regular Sunday Schedule</p> <p>9:15 AM Adult Confirmation Class Begins</p> <p>9:15 AM Youth Lenten Study Begins</p> <p>6:00 PM Perichoresis</p>	<p><i>23</i></p> <p>5:30 PM Evening Prayer</p>	<p><i>24</i></p> <p>5:30 PM Evening Prayer</p> <p>6:00 PM Vestry</p>	<p><i>25</i></p> <p>12:15 PM Holy Eucharist</p> <p>1:00 PM "New Clothes" Book Study</p> <p>5:30 PM Evening Prayer</p> <p>6:00 PM "Soup, Salad & Small Groups"</p> <p>7:00 PM Chancel Choir</p>	<p><i>26</i></p> <p>5:30 PM Evening Prayer</p>	<p><i>27</i></p> <p>5:30 PM Evening Prayer</p>	<p><i>28</i></p>
			<p><u>REGULAR SUNDAY MORNING SCHEDULE:</u></p> <p>8:00 AM Rite I Holy Eucharist</p> <p>9:00 AM Coffee Hour</p> <p>9:15 AM Christian Education</p> <p>10:30 AM Rite II Holy Eucharist</p>			

TRINITY EPISCOPAL CHURCH

906 Padon Street • Longview, TX 75601

Phone (903) 753-3366 • Fax (903) 753-0594

E-Mail: trinity@trinityparish.org

www.trinityparish.org

THE TRUMPET

Permit Type: Periodicals

Permit # 99990

Is published monthly by
Trinity Episcopal Church
906 Padon, Longview, TX

75601 Periodicals PAID

At Longview, TX

POSTMASTER: Send

Address changes to

906 Padon, Longview, TX

February Special Events

1st	Super Bowl Chili Cook-off (at First Christian) following 10:30 AM Service
2nd	St. Monday's, 11:30 AM, Parish Hall
8th	Compline, 8:30 PM, Nave
16th	Church Offices Closed
17th	Shrove Tuesday Pancake Supper, 5:30 PM, Parish Hall
18th	Ash Wednesday - 10:00 AM, 12 Noon, 6:00 PM Imposition of Ashes
22nd	Youth Sunday School Lenten Study Begins (ends on Palm Sunday), 9:15 AM
22nd	Adult Confirmation Class Begins, 9:15 AM
22nd	Perichoresis Worship, 6:00 PM, Nave
25th	Soup, Salad, & Small Group Lenten Study begins, 6:00 PM, Parish Hall

March Special Events

1st	Youth Sunday School Donuts, 9:00 AM
2nd	St. Monday's, 11:30 AM, Parish Hall
3rd	Kilgore College Chorale Spring Concert, Nave, 7:30 PM
8th	Compline, 8:30 PM, Nave
28th	Trinity School of Texas Spring Gala, 6:00 PM, Summit Club
22nd	Perichoresis Worship, 6:00 PM, Nave
29th	Palm Sunday